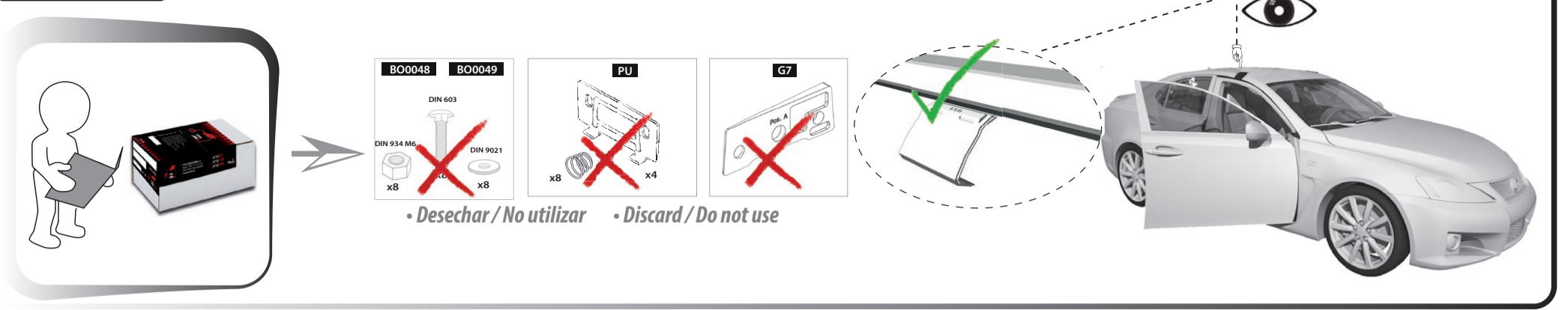
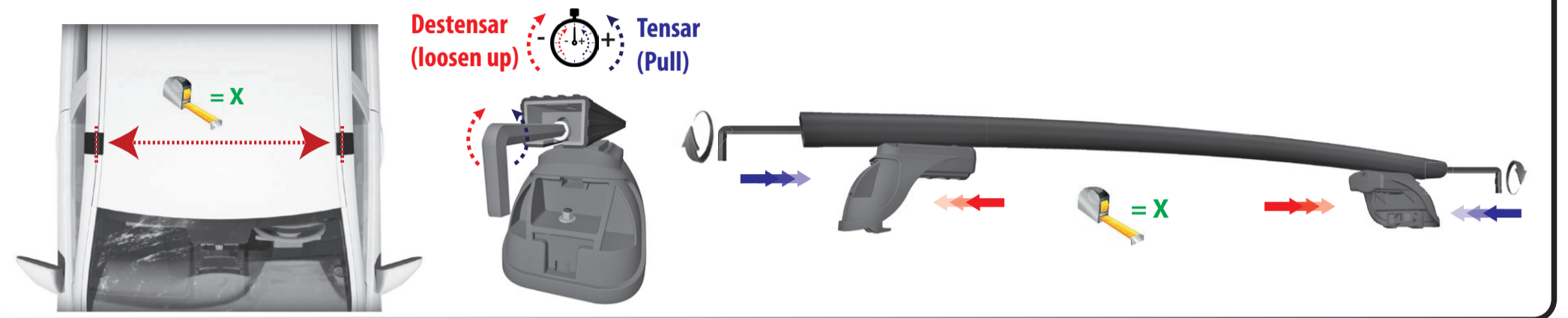


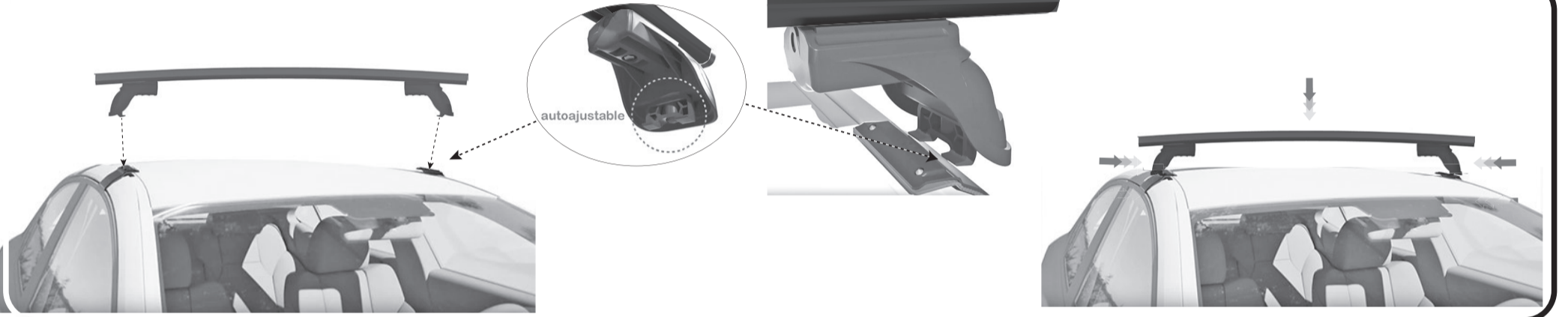
# 1 - KIT-TECK



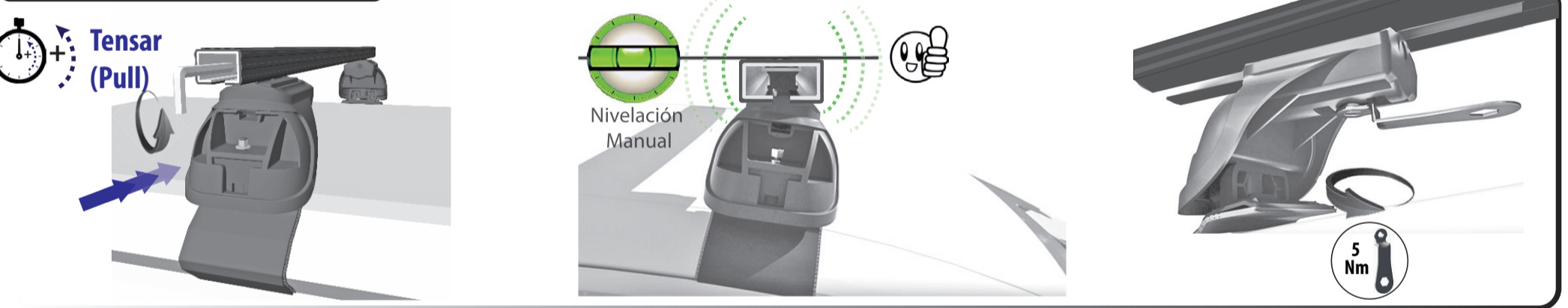
# 2 - AJUSTE MEDIDAS / ADJUST MEASURES



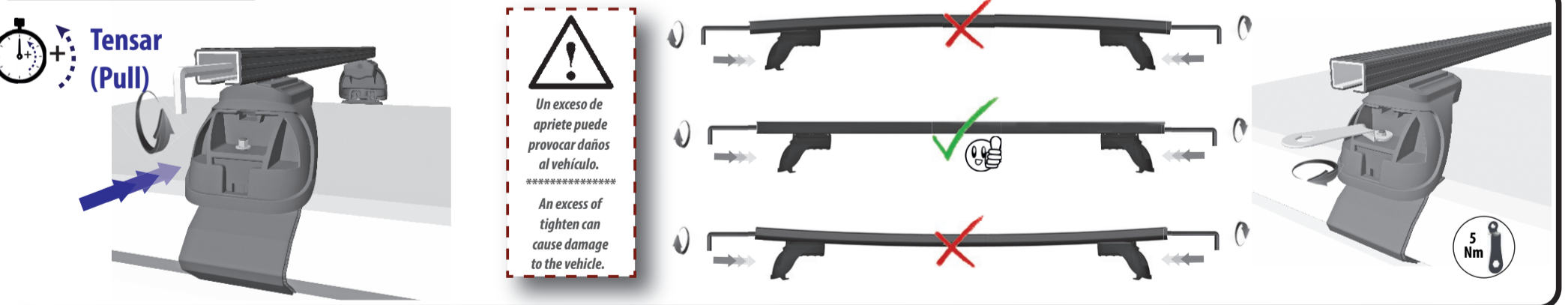
# 3 - ENSAMBLAJE / ASSEMBLY



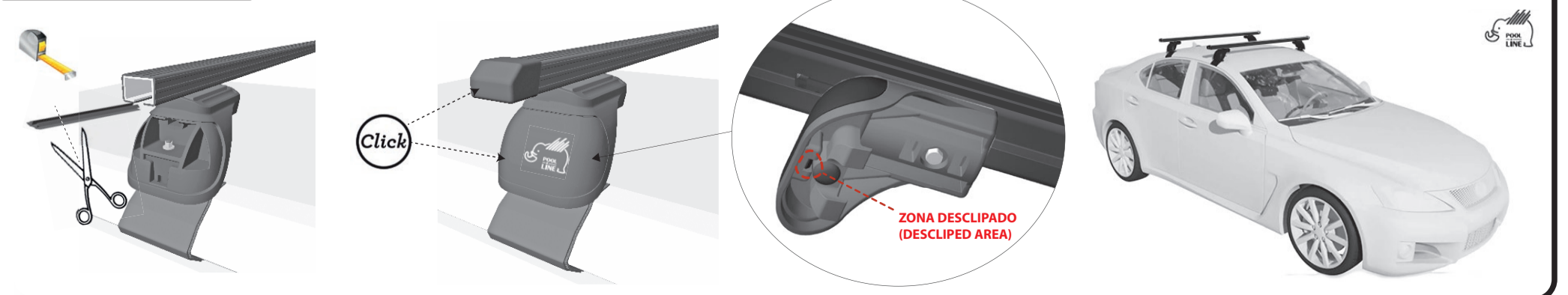
# 4 - PRE-TENSADO / PRESTRESSED



# 5 - TENSADO / TENSED



# 6 - ACABADO / FINISH



Nota: Guardar instrucciones para posibles montajes y desmontajes.

| Ref.   | cm     |
|--------|--------|
| 112071 | 110 cm |
| 112072 | 120 cm |
| 112073 | 130 cm |
| 112074 | 140 cm |



- E Instrucciones de montaje
- C Instruccions de muntatge
- GB Assembly instructions
- F Instruction de montage
- D Montageanleitung
- PT Instruções de montagem
- I Istruzioni di montaggio
- PL Instrukcja montażu
- CZ Montážní návod
- HU Szerelési Utasítás
- RO Instrucțiuni de montaj
- HR Detaljne upute
- TU Üncellikle montaj



112072

RV: 12/2022

RECYCLABLE

Nº HOMOLOGACIÓN: E9 26R04/00\*1306\*00

MAX. 80 KG.

www.pool-line.net

08415 - Bigues i Riells, Barcelona (España)  
C. Esquels, 19. P. I. Can Barri  
POOL-LINE ACCESORIOS, S.L.

